

**MACHINES:** These instructions are written for standard gauge punchcard machines with lace facility and ribber. We used a Brother 881 with ribber

**MACHINES WITHOUT RIBBER:** See page 20

**YARN:** Brockwell 4 ply Plain Cotton and 3 ply Mercerised Cotton

**FIBRE CONTENT:** Both yarns are 100% Cotton

**COLOUR:** We used 4 ply Plain Cotton in White (MC), Green Moss 26 (A) and Soft Pink (B) and 3 ply Mercerised Cotton in White (C)

**STOCKISTS:** To obtain these yarns, please write to Brockwell Wools Ltd., Stansfield Mill, Triangle, Sowerby Bridge, W. Yorks HX6 3LZ

refer to larger sizes; where there is only one set of figures, this applies to all sizes.

**MATERIALS**

Brockwell 4 ply Plain Cotton. 325[350:350:375:400]g in MC.  
100g in A.  
150[150:150:175:175]g in B.  
Brockwell 3 ply Mercerised Cotton.  
Approx 30g in C.  
Knit-in elastic to match MC.  
Ribbon rose (optional).

**GARMENT WEIGHS**

510g for size 92cm.

**MAIN TENSION**

After washing, 29 sts and 37 rows to 10cm measured over Fair Isle patt (tension dial approx 8).  
Tension must be matched exactly before starting garment.

**ABBREVIATIONS**

See page 20.

**NOTE**

When shaping using HP, always wrap yarn around the first inside N in HP to prevent a hole forming.  
Knit side is used as right side.

Measurements given are those of finished garment and should not be used to measure work on the machine.

**PUNCHCARD PATTERNS**

Fair Isle pattern:  
Punch card before starting to knit.  
Lace pattern:  
We used Brother card 18.  
If necessary punch card as shown before starting to knit.  
The lace card given is specifically for Brother machines. If you have a different make or model, the card must be adapted accordingly.

**COLOUR SEQUENCE FOR FAIR ISLE PATTERN**

Use MC in feeder 1/A throughout.

**BACK AND FRONT**

MC+A, K8 rows.  
MC+B, K17 rows.  
MC+A, K11 rows.  
MC+B, K11 rows.  
These 47 rows are rep throughout.

**SLEEVES**

MC+B, K 5[11:9:11:9] rows.  
Cont in sequence as given for back and front.

**BACK**

\* With RB in position, set machine for 2x2 rib. Push 130[138:142:150:158] Ns on MB and corresponding Ns on RB to WP. Arrange Ns for 2x2 rib. CAR. Using MC and knit-in elastic, cast on and K2 tubular rows. Using MC only, K2 tubular rows. Set RC at 000. Using MT-2/MT-2, K24 rows. Transfer sts to MB. Inc 0[0:1:1] st at each end. 130[138:144:152:160] sts. Insert punchcard and lock on first row. Set machine for patt. Using MT, K1 row. Set RC at 000. Release punchcard. Set carriage for Fair Isle knitting. Foll colour sequence given, work in patt.

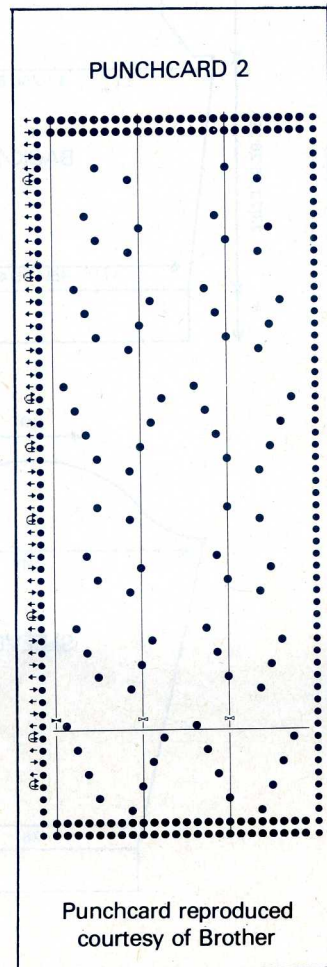
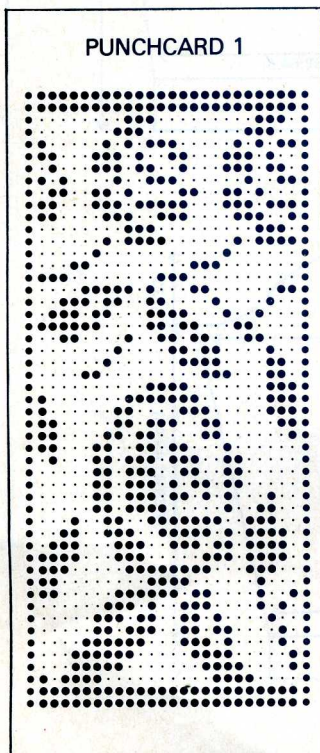
Inc 1 st at each end of every foll 17th [17th:19th:19th:20th] row, 4 times in all. 138[146:152:160:168] sts. K until RC shows 86[86:96:96:104].

**SHAPE ARMHOLES**

Set RC at 000. Cast off 7 sts at beg of next 2 rows. Dec 1 st at each end of next and every foll alt row, 9[10:10:11:12] times in all. 106[112:118:124:130] sts \*.  
K until RC shows 86.

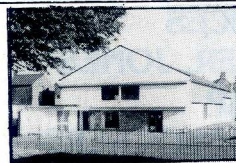
**SIZES**

To suit bust 87[92:97:102:107]cm.  
Finished measurement 95[101:105:110:116]cm.  
Length 54.5[54.5:57.5:57.5:59.5]cm.  
Sleeve seam 42[44:46:47:48]cm.  
Figures in square brackets [ ]

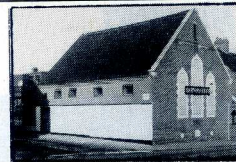


Punchcard reproduced courtesy of Brother

**YARN MARKETS (UK) LTD**



**EAST MIDLANDS**  
UPPINGHAM YARNS LTD.  
NORTH STREET EAST (MKN),  
UPPINGHAM, LEICESTERSHIRE  
LE15 9QT. TEL: 0572 823747.  
OPEN 7 DAYS.



**NORTH EAST**  
KNITTERS YARNS LTD.  
RAVENSWORTH ROAD,  
DUNSTON, GATESHEAD NE11 9AB.  
TEL: 091 460 8175.  
OPEN TUES. TO SAT.



**SOUTH WALES**  
COOKE YARNS LTD.  
DINAM PARK AVENUE,  
TON PENTRE, RHONDDA CF41 7AT.  
TEL: 0443 431500.  
OPEN MON. TO SAT.



**LONDON N.E.**  
Gloria's Yarns Ltd Mini Market  
SOMERBY ROAD, OFF SALISBURY  
AVE, BARKING IG11 9XG.  
TEL: 01-594 2221  
Open Tues/Sat 10am to 5pm  
Mon 10am to 2pm

'Cheap and reliable' industrial machine and hand knitting yarns. Visit a warehouse, ideal for public, clubs and trade. Please send me mail order pamphlets and brochure to:

Name .....

Address .....

..... Postcode .....

Send to: Yarn Market, Uppingham only (SAE please) MKN

### SHAPE SHOULDERS

Set carriage to hold. Push 5[6:6:7:7] Ns to HP at opposite side to carriage, K1 row, 6[10:4:8:2] times. Push 6[0:7:8:8] Ns to HP at opposite side to carriage, K1 row, 4[0:6:2:8] times. Cast off rem 52 sts.

Return 27[30:33:36:39] Ns at right from HP to WP. Using WY, K a few rows and release from machine.

Return rem 27[30:33:36:39] Ns at left from HP to WP. Using WY, K a few rows and release from machine.

### FRONT

Work as given for back from \* to \*. K until RC shows 48. CAR.

### SHAPE NECK

Make a note of row on punchcard. Using nylon cord, K 53[56:59:62:65] sts at left by hand taking Ns down into NWP. Cont on rem 53[56:59:62:65] sts at right for first side. Dec 1 st at neck edge on every row, 16 times. Dec 1 st at neck edge on every foll alt row, 10 times. 27[30:33:36:39] sts.

K until RC shows 87. CAL.

### SHAPE SHOULDERS

Set carriage to hold. Push

5[6:6:7:7] Ns to HP at right, K2 rows, 3[4:2:4:1] times. Push 6[0:7:0:8] Ns to HP at right, K 2[0:2:0:2] rows, 1[0:2:0:3] times. 6[6:7:8:8] Ns rem in WP. Cancel hold. Return Ns from HP to WP. Set machine for st st. Using WY, K a few rows over the 27[30:33:36:39] shoulder sts and release from machine. Unravel nylon cord over sts at left. Reset punchcard on row previously noted. Reset RC at 48. Complete to correspond with first side, reversing shapings.

### SLEEVES

With RB in position, set machine for 2x2 rib. Push 82 Ns on MB and corresponding Ns on RB to WP. Arrange Ns for 2x2 rib. Using MC and knit-in elastic, cast on and K2 tubular rows. Using MC only, K2 tubular rows. Set RC at 000. Using MT-2/MT-2, K20 rows. Transfer sts to MB.

Insert punchcard and lock on row 43[37:39:37:39]. Set machine for patt. Using MT, K1 row. CAR. Release punchcard. Set RC at 000. Set carriage for Fair Isle knitting.

Foll colour sequence given, work in patt.

Shape sides by inc 1 st at each end on every foll 5th[5th:6th:6th:6th] row, 12[10:24:24:12] times. Inc 1 [1:0:0:1] st at each end of every foll 6th[6th:0:0:7th] row, 12[14:0:0:12] times. 130 sts.

K until RC shows 138[144:152:154:160].

### SHAPE TOP

Set RC at 000. Cast off 7 sts at beg of next 2 rows. Dec 1 st at each end of next and every foll alt row, 11 times in all. K1 row. Cast off 2 sts at beg of next 16 rows. Cast off 4 sts at beg of next 8 rows. RC shows 48. Cast off rem 30 sts.

### COLLAR

Push 194 Ns to WP. Using WY, cast on and K a few rows ending CAR. Using C and MT-4, K2 rows. Using MT-1, K1 row. Using MT-4, K2 rows. Make a hem by hanging loops from first row worked in C on to

corresponding Ns. Leave WY and comb in place. Weight evenly.

Using MT-3, K1 row. CAR. Insert lace card and lock on first row. Set machine for lace knitting. Set RC at 000. Using MT-3, K24 rows lace patt. Set machine for st st. K2 rows. Using MT+2, K1 row. Cast off using latch tool method.

Press on wrong side, allowing hem to form scalloped edge.

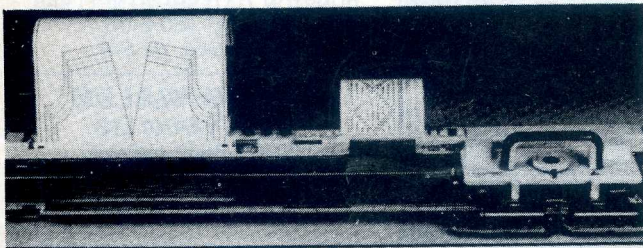
### TO MAKE UP

Wash and block pieces. Allow to dry. Steam press on wrong side.

Graft shoulder seams tog. Sew in sleeves. Join side and sleeve seams.

With right side of collar to wrong side of garment, attach cast off edge of collar to neck edge. Fold collar to outside. Attach rose at centre front if desired.

## KNITTING MACHINES AT VERY LOW PRICES TOYOTA, KNITMASTER, JONES AND PASSAP HAGUE LINKERS, OVERLOCKERS MOST MAKES OF SEWING MACHINES IN STOCK



MAIL ORDER  
ACCESS - BARCLAYCARD  
EXPORTS - FREE DELIVERY

CONE YARN AND ACCESSORIES

SEWMASTER

239 High Street, Slough  
Tel 0753 25946 (Dept MKN)

15 Wote Street, Basingstoke  
Tel: 0256 21500 (Dept MKN)

